

TPR, BSL AND TEYL

*Lilyana Parashkevova
British Council, Romania*

*19th BETA Annual Conference
24 - 25 April, 2010
Veliko Tarnovo*





- ◎ **"Babies don't learn by memorizing lists; why should children or adults?"**

- ◎ **Dr. Asher**



TOTAL PHYSICAL RESPONSE



Coordination between speech and action



Based on the trace theory:



Oral repeat + Gesture or body movement =

Can assist in recalling information



Stress-free and enjoyable



Addresses all learning styles:

**Linguistic-
verbal**

**Bodily-
kinesthetic**

Logical

Visual

Interpersonal (social)



TPR is based on the idea that human brain is biologically predisposed to acquiring any language



The evidence can be found in the way any sign language is learned

Sign language

A visual way to convey messages through

using gestures

facial expressions

and body language



BSL (British Sign Language)

Own grammar and syntax not dependent on spoken language

SSL (Sign Supportive Language)

Used to teach English to school children with hearing impairment

Makaton

Used to teach BSL to students with SLD – severe learning difficulties (mental and physical)

If applied in the classroom they provide:

- **stress-free**
- **highly enjoyable**
- **and memorable**



• learning environment

“Tell me,

and I’ll remember for a day.”

Show me,

and I’ll remember for a week.”

Involve me,

and I’ll remember for a lifetime.”

References:

1. www.tpr-world.com
2. <http://www.tprsource.com>
3. <http://www.british-sign.co.uk>
4. **British Sign Language: A Beginner's Guide (Paperback), [Dorothy Miles](#)**

Thank you for listening

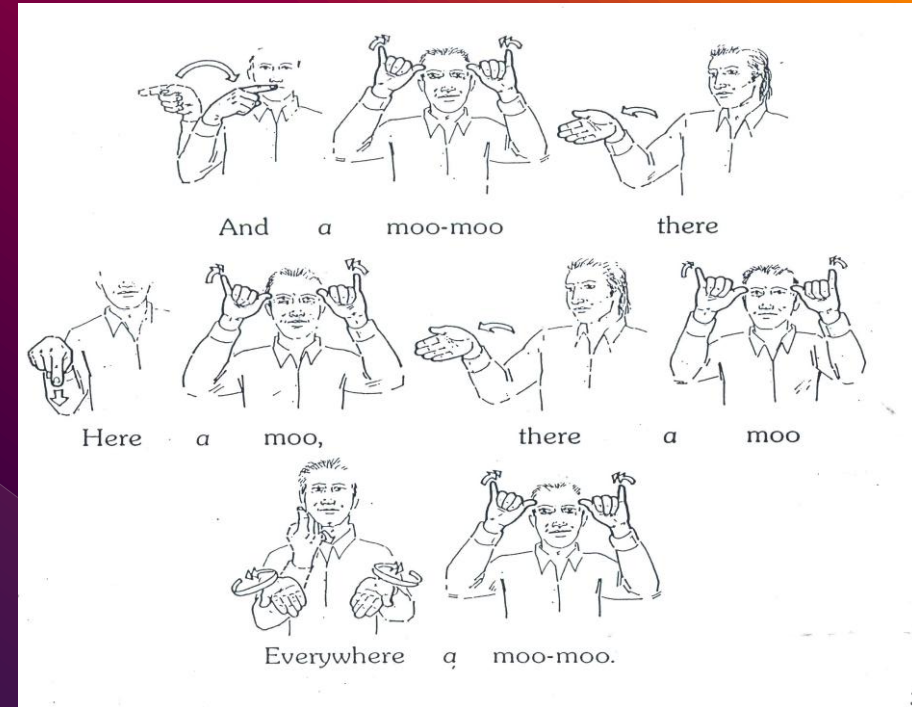
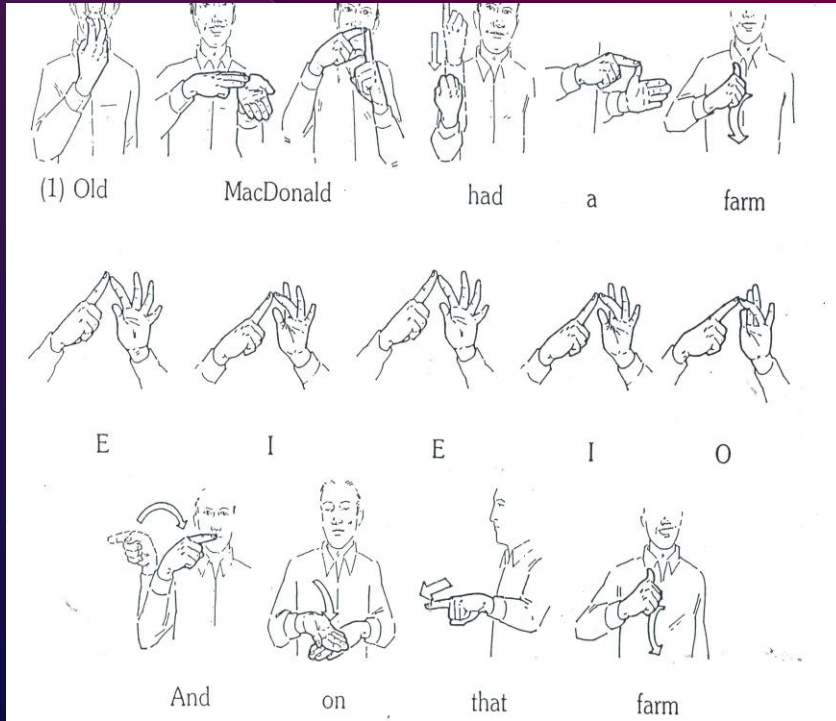
and

participating

I hope you had fun

L. Parashkevova

Appendix 1: Old MacDonald had a farm



Appendix 2 – Sing a rainbow

